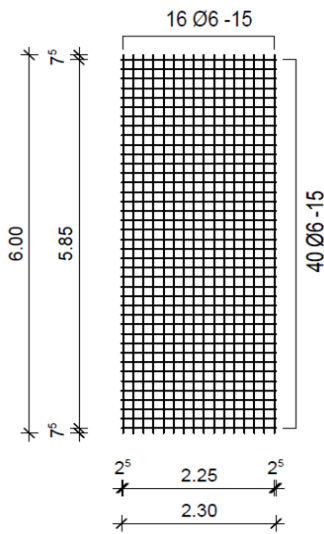


**Lagermatten - Teil 1 - Q-Matten**

nach Dt Lieferprogram ab 01.01.2008

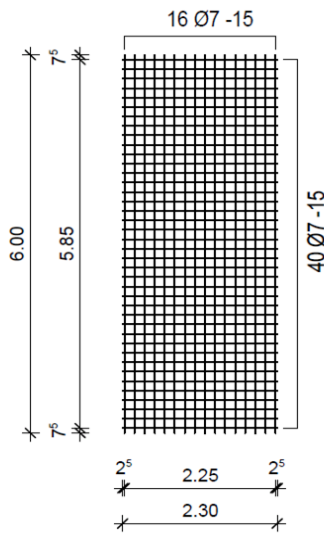
**Q188**

6.00m/2.30m \_ 41,7kg/Stk



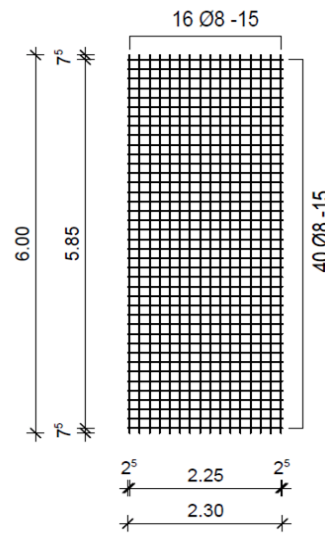
**Q257**

6.00m/2.30m \_ 56,8kg/Stk



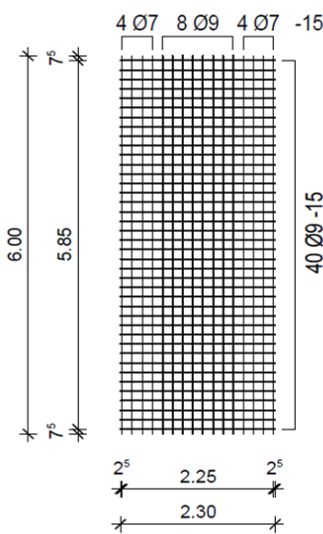
**Q335**

6.00m/2.30m \_ 74,3kg/Stk



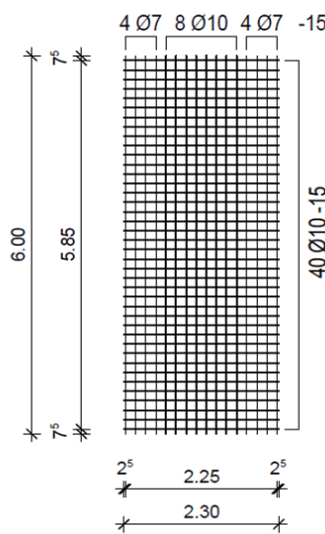
**Q424**

6.00m/2.30m \_ 84,4kg/Stk



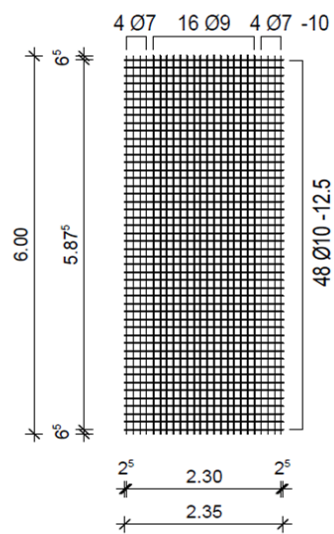
**Q524**

6.00m/2.30m \_ 100,9kg/Stk



**Q636**

6.00m/2.35m \_ 132,0kg/Stk

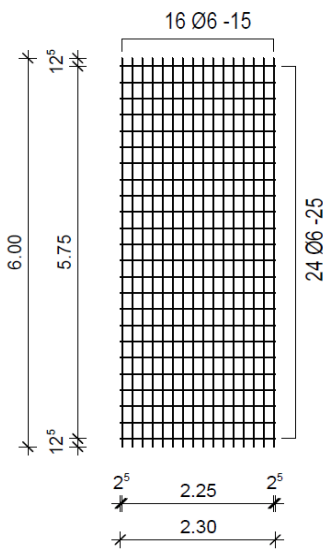


**Lagermatten - Teil 2 - R-Matten**

nach Dt Lieferprogram ab 01.01.2008

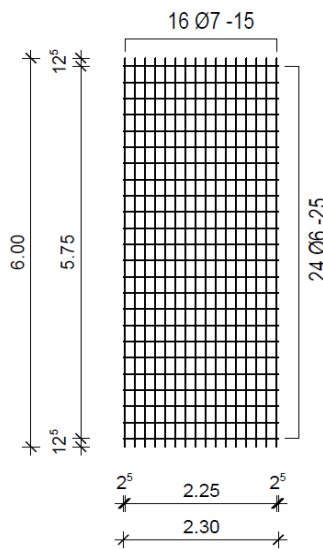
**R188**

6.00m/2.30m \_ 33,6kg/Stk



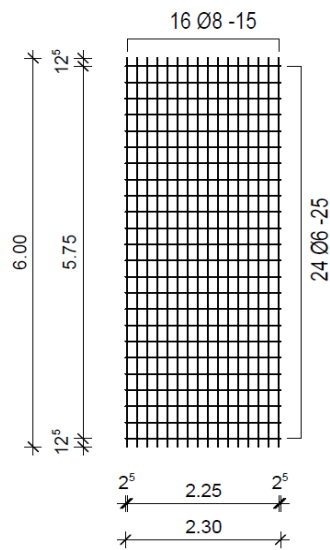
**R257**

6.00m/2.30m \_ 41,2kg/Stk



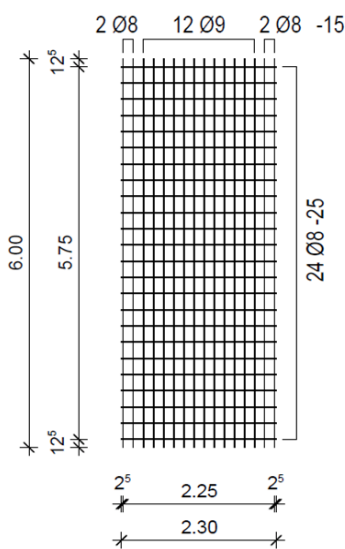
**R335**

6.00m/2.30m \_ 50,2kg/Stk



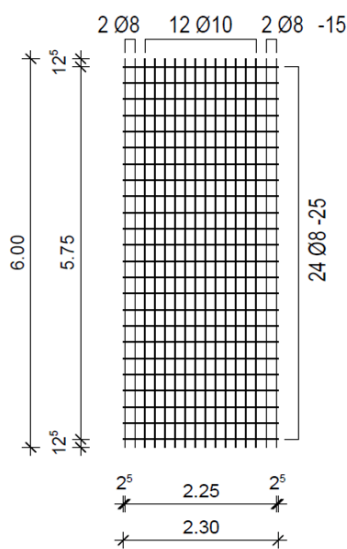
**R424**

6.00m/2.30m \_ 67,2kg/Stk



**R524**

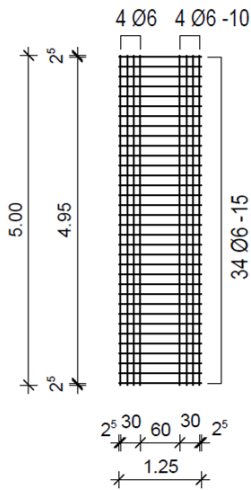
6.00m/2.30m \_ 75,7kg/Stk



**HS-Matten**

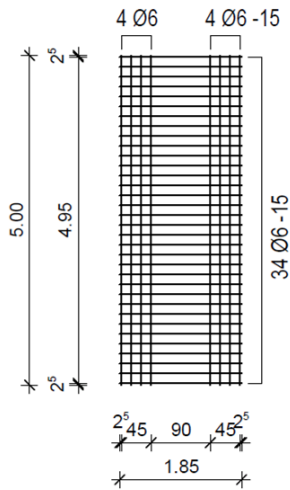
**HS1**

5.00m/1.25m \_ 18,315kg/Stk



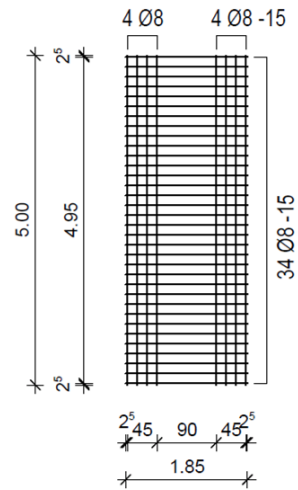
**HS2**

5.00m/1.85m \_ 22,844kg/Stk



**HS3**

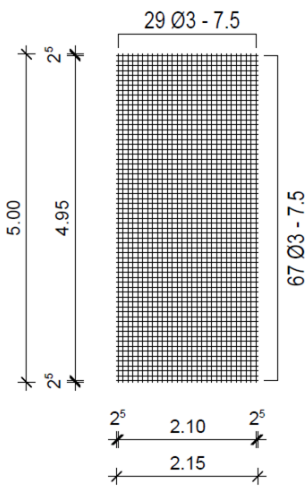
5.00m/1.85m \_ 40,646kg/Stk



**N-Matten**

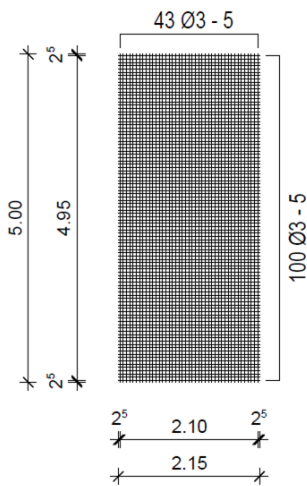
**N94**

5.00m/2.15m \_ 15,9kg/Stk



**N141**

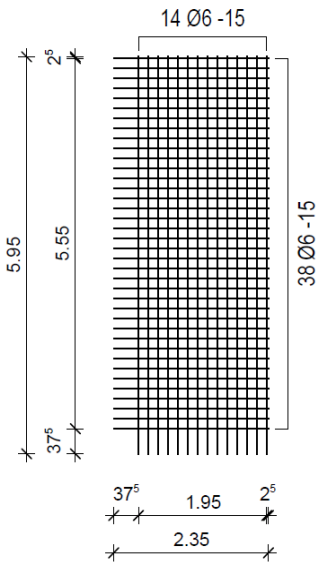
5.00m/2.15m \_ 23,65kg/Stk



**Vorratsmatten - Typ B**

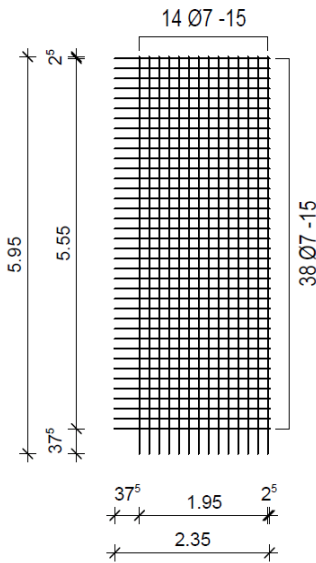
**B188**

5.95m/2.35m \_ 38,3kg/Stk



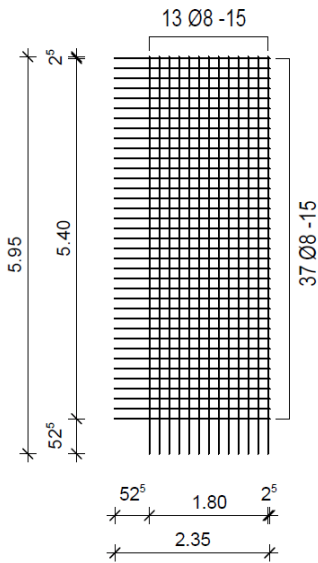
**B257**

5.95m/2.35m \_ 52,1kg/Stk



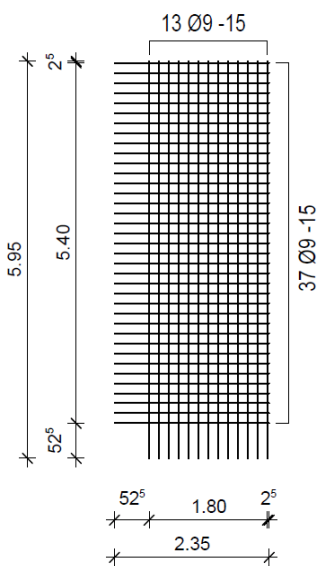
**B335**

5.95m/2.35m \_ 64,9kg/Stk



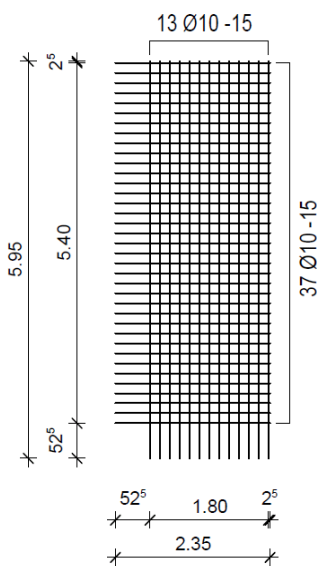
**B424**

5.95m/2.35m \_ 82,0kg/Stk



**B524**

5.95m/2.35m \_ 101,4kg/Stk



**B636**

5.95m/2.35m \_ 120,2kg/Stk

